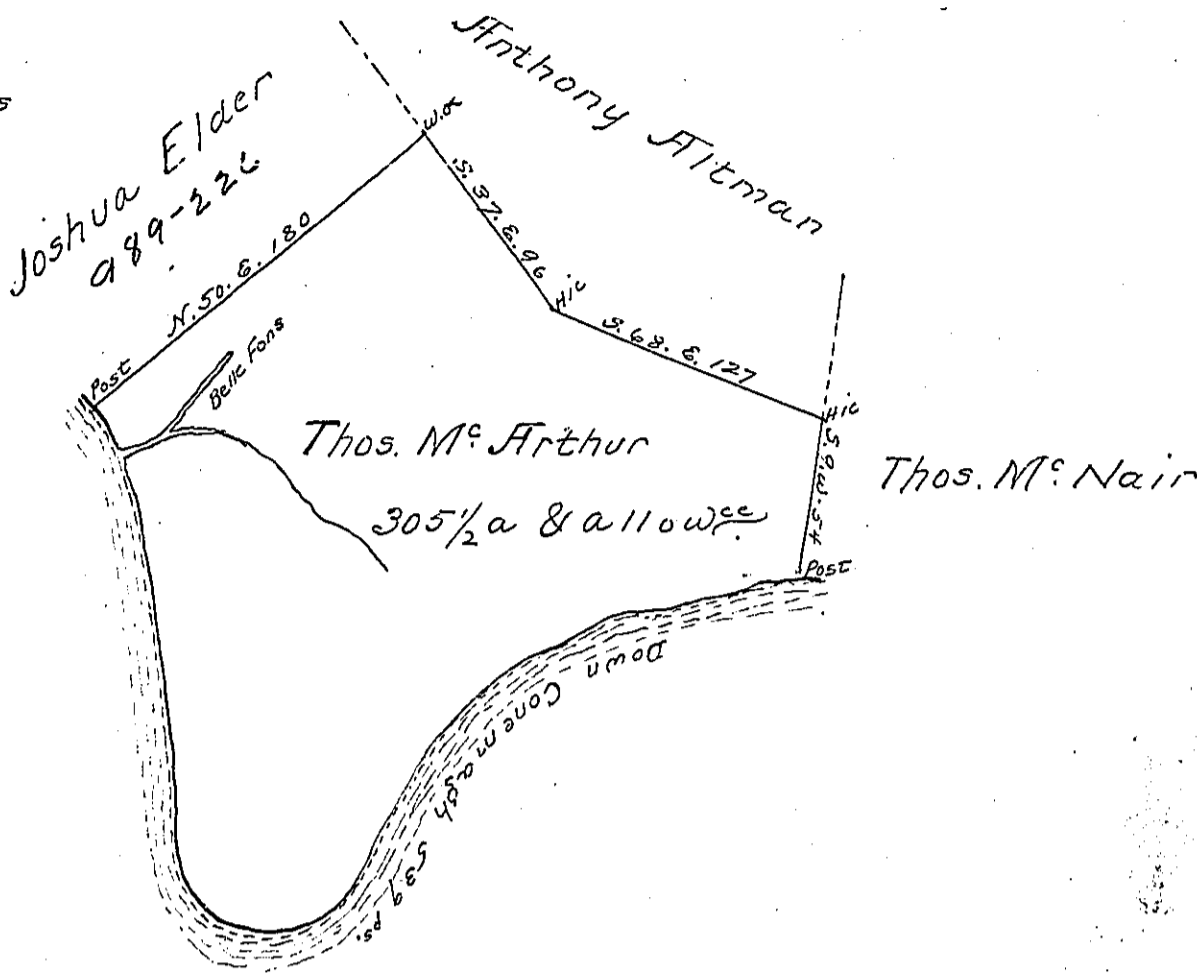


Courses & Distances  
down the River

- S. 79 1/2 W. 38
  - S. 70. W. 89
  - S. 47. W. 22
  - S. 43. W. 52
  - S. 29. W. 64
  - S. 73. W. 22
  - N. 85. W. 16
  - N. 68. W. 24
  - N. 17. W. 30
  - Norch 39
  - N. 7. W. 56
  - N. 12. W. 62
  - N. 34. W. 25
- 539



Belle Fons, Survey'd to Thomas M<sup>c</sup> Arthur on the 30th day of October 1784, containing three hundred & five acres & an half acre & allowance of six pcent. Situate on the North side of Conemagh about two miles below the mouth of Black Lick creek in Westmoreland County. By warrant of the 23d day of August 1784

Joshua Elder S.

John Lukens Esqr. S. Genl.

IN TESTIMONY that the above is a copy of the original remaining on file in the Department of Internal Affairs of Pennsylvania, made conformably to an Act of Assembly approved the 16th day of February, 1833, I have hereunto set my Hand and caused the Seal of said Department to be affixed at Harrisburg, this second day of June 1903

Joac P. Brown  
Secretary of Internal Affairs.